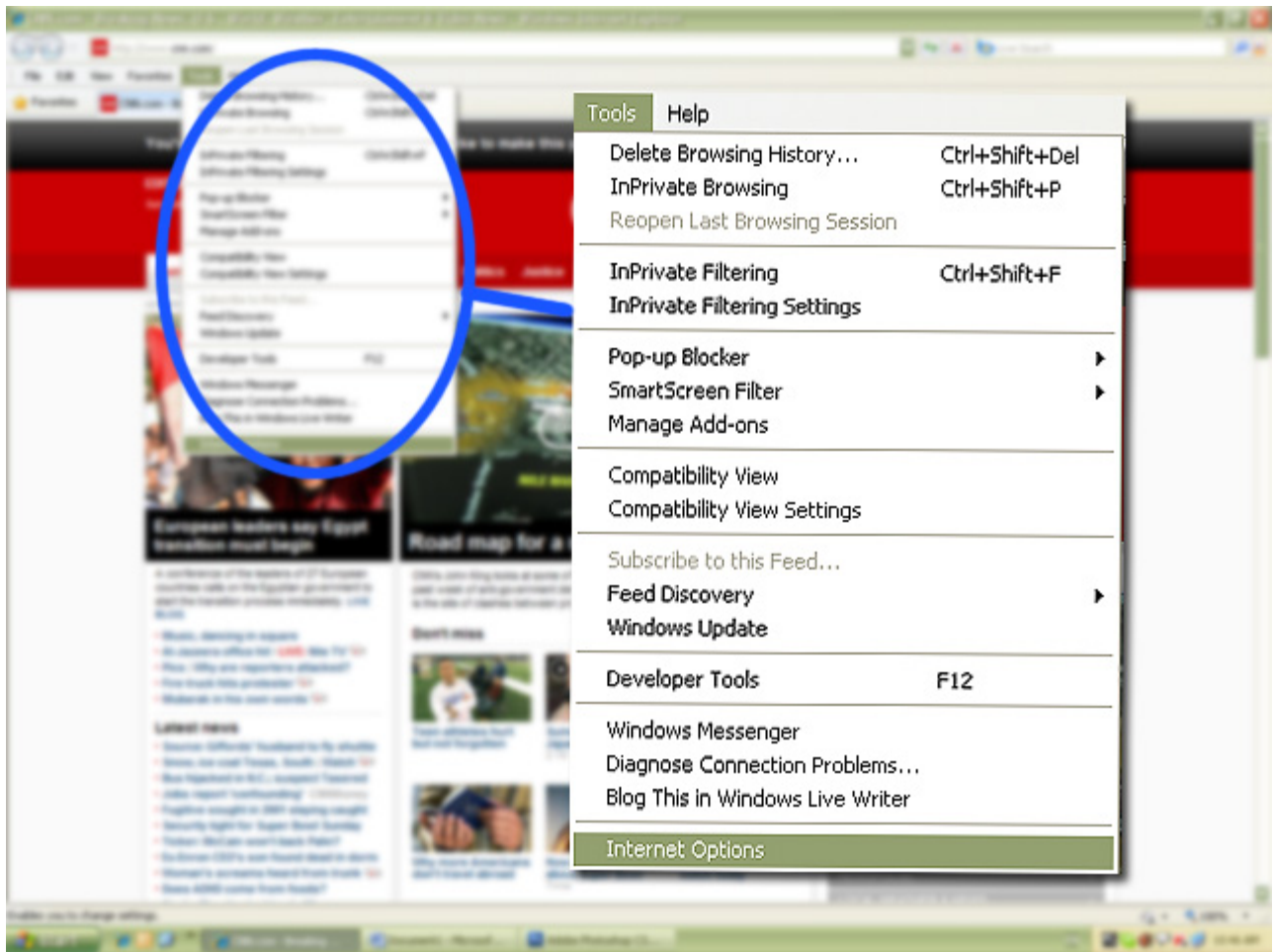


# How to enable ActiveX in IE

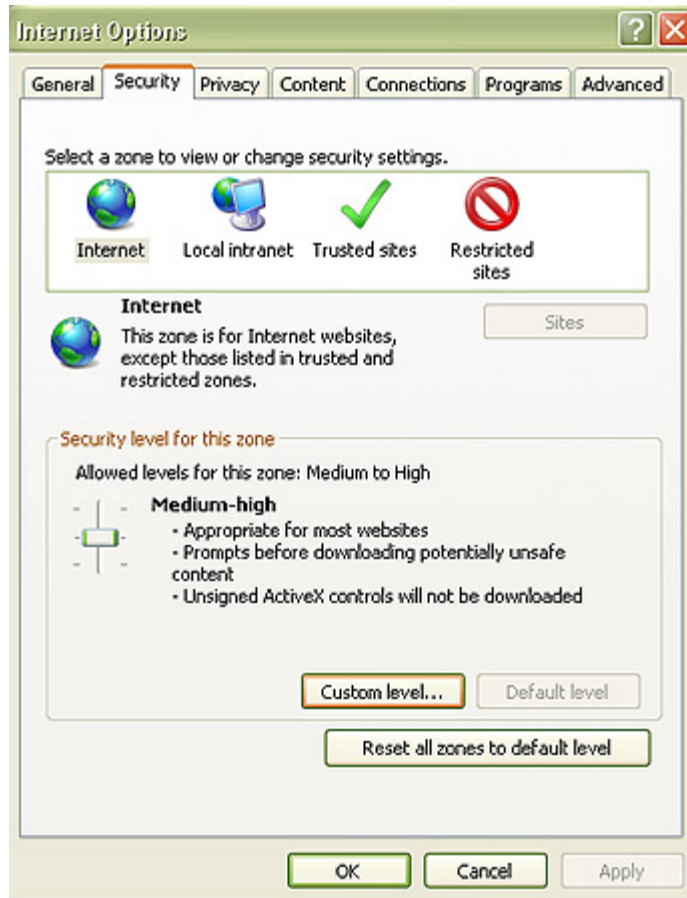
After finish the setting of DVR, you also need to enable ActiveX in IE for remote viewing.

Here is the instruction to enable ActiveX.

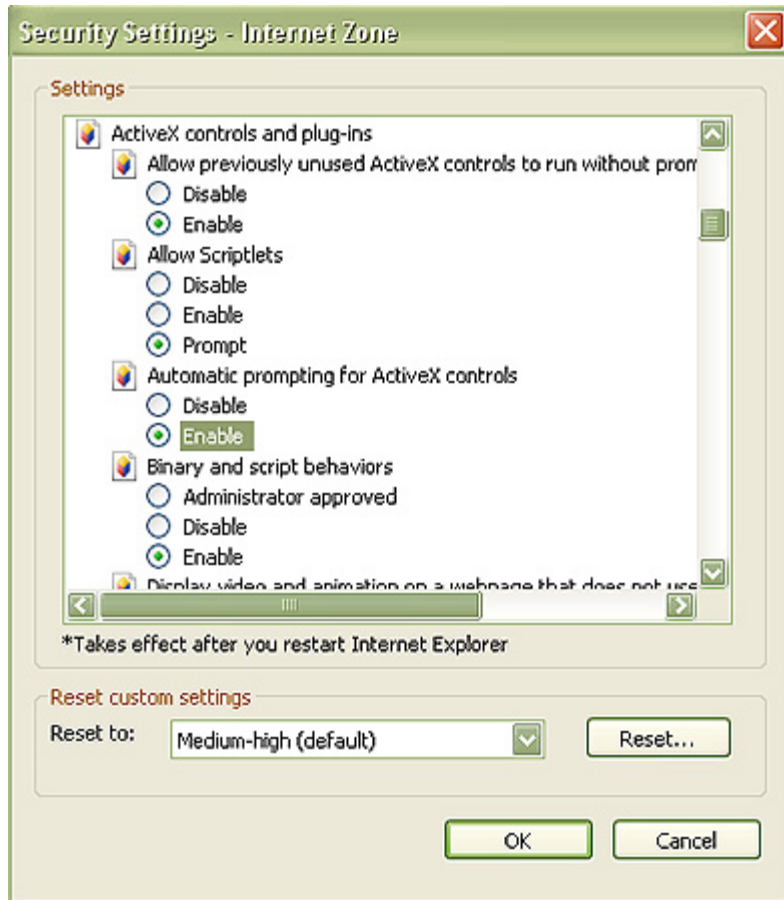
## 1. Select [Tools / Internet Options ]on the menu bar in IE



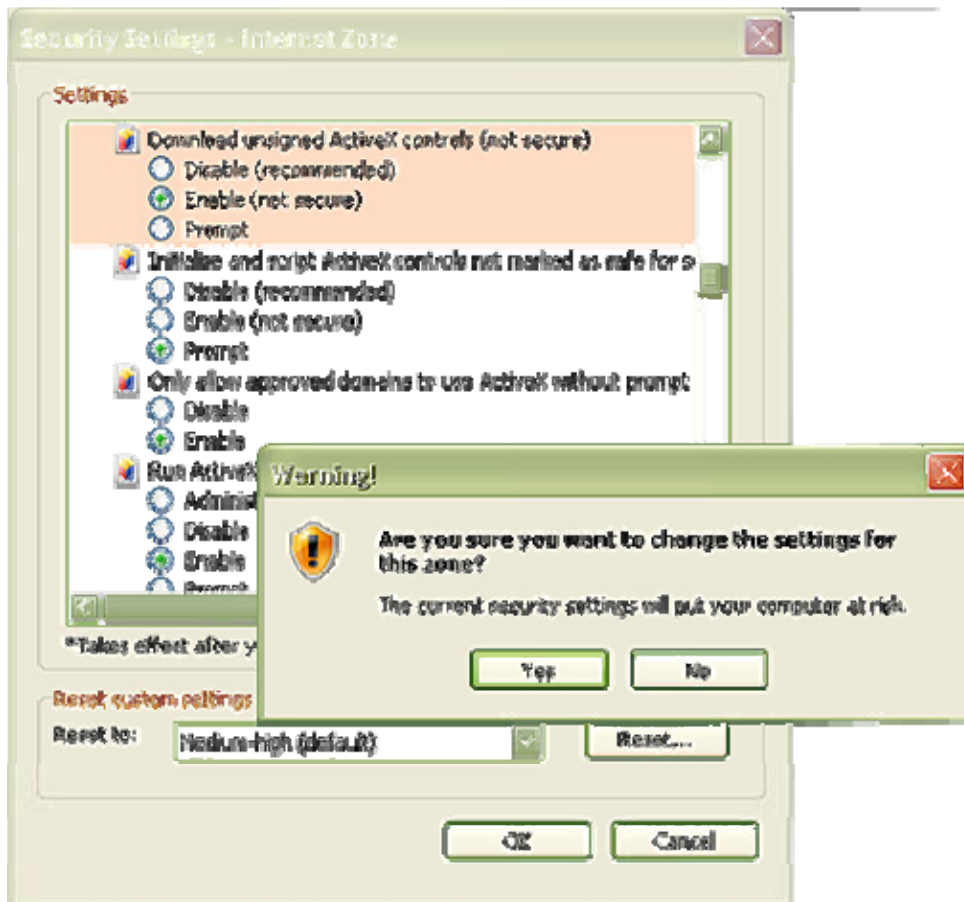
2. Find the [Security] tab in Internet Options, select [ Custom Level ] in Security level for this zone box



3. Scroll down the side bar to ActiveX controls and plug-ins and [ Enable ] all the ActiveX function.



4. After enable all ActiveX functions, click [Yes ] in the pop-up window.



NOTE: Next time when you click IE, it will show as the following page but it is normal.

